

IT'S BLUE  
IT'S GREEN  
IT'S FIRAD

Release 09 | 2024



**FIRAD**<sup>®</sup>

BOSCH CRI2-20/22  
SOLENOID INJECTOR 2,200 Bar  
CATALOGUE



**FIRAD**<sup>®</sup>

LET THE FUTURE COME



**OEM CODES AND PARTS NUMBERS ARE  
GIVEN FOR REFERENCE PURPOSE ONLY**

OEM CODES AND PARTS NUMBERS ARE GIVEN FOR REFERENCE PURPOSE ONLY



## ABBREVIATIONS

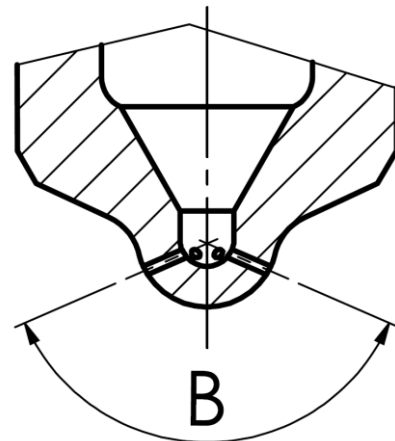
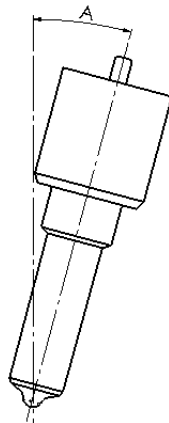
### - Holes

In this section are reported the information about how many micro holes there are and their diameter, in this following way: <N.microholes> x <Diameter microholes>

### - Angles

In this section are reported the information related to nozzle and micro holes angular position

Engine Angle	Spray Angle
A	B



OEM CODES AND PARTS NUMBERS ARE GIVEN FOR REFERENCE PURPOSE ONLY



FIRAD code	BOSCH® Stamping	BOSCH® Injector Code	BOSCH® Inj. Remanufactured Code	OE code	Vehicle/ Engine
LNF096	F00VW40096 (0)	0 445 110 523	0 986 435 262	35 06 2015F (VM MOTORI)	/
LNF097	F00VW30097	0 445 110 469 0 445 110 468	0 986 435 258	SKODA 04L 130 277 AC AUDI 04L 130 277 AUDI 04L 130 277 AC SEAT 04L 130 277 SEAT 04L 130 277 AC SKODA 04L 130 277 VW 04L 130 277 VW 04L 130 277 AC	AUDI A3-A5-A6-Q3-Q5-Q6 SEAT Alhambra – Ateca – Leon SKODA Octavia- Yeti- Kodiaq VW Caddy- Golf
LNF098	F00VW30098 (0)	0 445 110 556 0 445 110 555		AUDI 04L 130 277 P VW 04L 130 277 P	
LNF104	F00VW40104	0 445 110 564	0 986 435 255	500060540 IVECO 500061270 IVECO 5801644454 IVECO 68226 951AA DODGE	IVECO Daily
LNF107	F00VW30107 (0)	0 445 110 743	0 986 435 269	13 53 8 514 148 (BMW) 13 53 8 514 149 (BMW) 8 514 148 (BMW)	MINI Cooper SD MINI Cooper Countryman BMW 320d, 318d, 220d, 420d, 520d
LNF133	F00VW30133 (0)	0 445 110 673 0 445 110 674		55260836 (ALFA/FIAT) 55260837 (FIAT)	ALFA Giulia 2.2 ALFA Stelvio 2.2
LNF154	F00VW30154+ (0)	0 445 110 955 0 445 110 954		CITROEN 98 289 598 80 DS 98 289 59880 FIAT 98 289 59880 FIAT K9828959880 FORD 2315514 FORD JX6Q-9F593-AB OPEL 9828959880 PEUGEOT 98 289 598 80 TOYOTA SU001-A7999 VAUXHALL 98 289 59880	CITROEN Berlingo-C4 OPEL Corsa – Zafira PEUGEOT 308-3008

OEM CODES AND PARTS NUMBERS ARE GIVEN FOR REFERENCE PURPOSE ONLY



# FIRAD®

LET THE FUTURE COME



## GEOMETRIC FEATURE

FIRAD code	BOSCH® Stamping	Engine angle	Spray angle	Holes
LNF096	F00VW40096 (0)	0°	149°	7 x 0,140
LNF097	F00VW30097	0°	163°	7 x 01,50
LNF098	F00VW30098 (0)	0°	161°	8 x 0,135
LNF104	F00VW40104	0°	149°	8 x 0,135
LNF107	F00VW30107 (0)	0°	149°	8 x 0,120
LNF133	F00VW30133 (0)	0°	149°	7 x 0,150
LNF154	F00VW30154+ (0)	0°	163°	8 x 0,110

OEM CODES AND PARTS NUMBERS ARE GIVEN FOR REFERENCE PURPOSE ONLY